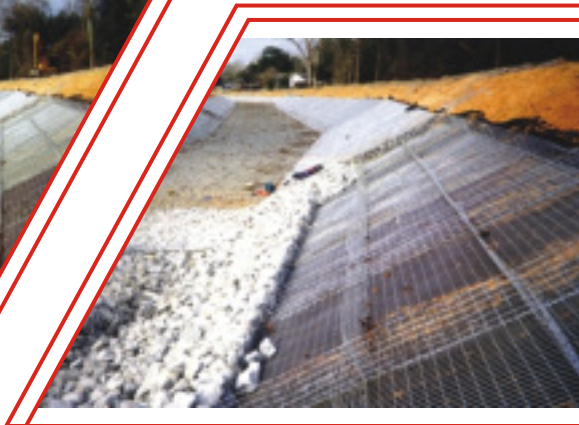


# Modular Gabion Systems



## Project

### Location:

Nall Street, Mobile Alabama, USA

### Project Owner:

City of Mobile, Project # 99-202-13

### Project Engineer:

Rowe Surveying & Engineering Co., Inc.

3755 Cottage Hill Road

Mobile, AL 36609

Contact: Don Rowe (251) 666.2766

### Contractor:

Regency Construction

287 Rue Piper

Slidell, LA 70461

Project Superintendent: Travis Yates

Contact: Paul Kosbob (985)649-3335

### Project Notes:

The Nall Street Channel is quite typical of gabion channel lining projects. Here, a trapezoidal channel in a residential area feeds stormwater and runoff into Three Mile Creek. During heavy rains, water may move quickly through the channel causing scour and erosion. To prevent such erosion, the channel may be lined with gabion mattresses. This project utilized 9" thick, PVC coated, gabion mattress revetments on the channel bottom and sloped sides (1 ft vertical rise to 2 ft horizontal run). The installation was constructed from standard roll stock mesh with a 1.5" x 3" mesh opening.

The photo at top left shows the channel as spontaneous revegetation is beginning. The gabions stabilize soil sufficiently to support tender plants which would otherwise be washed away. In time, the much of the channel will be covered in mature vegetation and regain a very pleasing and natural appearance while the network of roots below provides additional erosion protection.



## MODULAR GABION SYSTEMS

2221 Canada Dry Street, Houston, Texas 77023 USA

800.324.8282 • 713.924.4371 • 713.924.4381 fax

[www.gabions.net](http://www.gabions.net) • [wire@gabions.net](mailto:wire@gabions.net)

Erosion Control Specialists